

DELTA®-MS

Foundation Waterproofing Membrane.™

Below grade foundation waterproofing for block and poured concrete structures.

Installation Instructions

RECOMMENDED TOOLS:

- Concrete nails 1 1/4" - 1 1/2"
- Hammer or automated nailing gun Trak-Fast 1100, Hilti DXA 40, DXA 41
- Utility knife or tin snips
- Large caulking gun, chalk line, broom
- * For masonry installation Trak-Fast 1100 gun is recommended for installation on block. Attach with 1 1/4" - 1 1/2" concrete nail and DELTA®-FAST'ner.

GETTING DOWN TO INSTALLATION:

- Snap a chalk-line 1" below expected final grade line as a starting point, and clean top of footer from any gravel and debris with broom.
- The "flat tab" and orange stripe should always be at the top of your installation and facing the installer.
- Place the bottom of the roll on top of the footing with the roll positioned in the direction of installation for easy roll-out of the dimpled membrane (See Detail 1).

ROLL OUT DELTA®-MS:

- For ease of installation it is suggested to work with 2 people.
- Roll out DELTA®-MS approximately 10' in length along the wall.
- As one person holds the DELTA®-MS, the other person installs initial DELTA®-FAST'ners at appropriate intervals as shown in the Anchoring Procedure.
- Always install the DELTA®-MS tight and even over the foundation wall.
- For foundation heights greater than the roll height start rolling out DELTA®-MS at the bottom of the wall. The next course of DELTA®-MS shall overlap the bottom layer by at least 6".

INSTALLING AROUND CORNERS:

- Install DELTA®-MS on **INSIDE CORNERS** as tightly as possible by pre-bending the membrane in the corner, then fastening it in place with DELTA®-FAST'ners.
- Install DELTA®-MS on **OUTSIDE CORNERS** as tightly as possible by pre-bending the membrane around the corner, then fastening it in place with DELTA®-FAST'ners. Do not install any DELTA®-FAST'ners within 5" of the outside corner to avoid damage to the wall (See Detail 2).

JOINTS AND OVERLAPS:

- Overlap DELTA®-MS at all joints at least 6" regardless of position.
- Apply a 1/2" bead of DELTA®-SEALANT between the two sheets to be overlapped (See Detail 3).
- **VERTICAL JOINTS** require the installation of DELTA®-FAST'ners over the full height of the joint at 12" o/c.
- **HORIZONTAL JOINTS** require the installation of DELTA®-FAST'ners over the full length of the joints at 12" o/c. DELTA®-FLASH is not required on the lower section (See Detail 4).

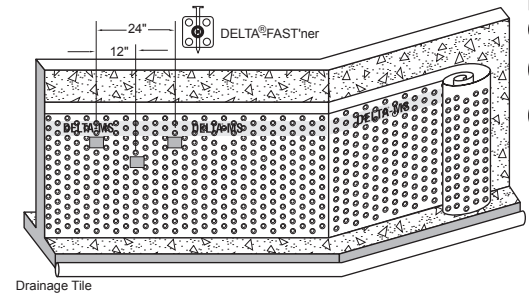
ANCHORING DELTA®-MS:

- For anchoring of DELTA®-MS use DELTA®-FAST'ners with 1 1/4" - 1 1/2" concrete nails.
- Install the first row of DELTA®-FAST'ners 2" below the orange stripe.
- Install the second row of DELTA®-FAST'ners 4" to 6" below the first row of DELTA®-FAST'ners, inserting them in a stitched "W" pattern at the required spacing (See Detail 5).

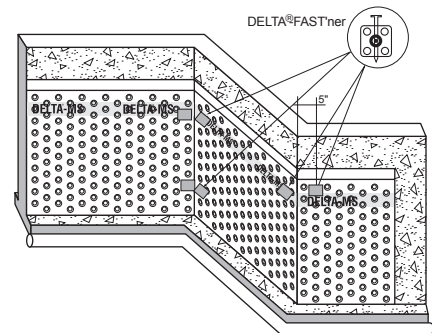
INSTALLING DELTA®-FLASH:

- Position the DELTA®-FLASH so that the top of the flat tab is completely covered behind the DELTA®-FLASH.
- Install 1 1/4" - 1 1/2" concrete nails at 8" o/c.
- Bend DELTA®-FLASH around inside and outside corners keeping it tight to the wall. Place nails at wall-corners not closer than 5" to the corner (See Detail 5).
- Install DELTA®-FLASH at all vertical terminations of the membrane.

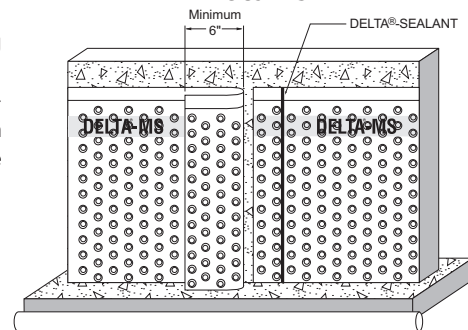
Detail 1



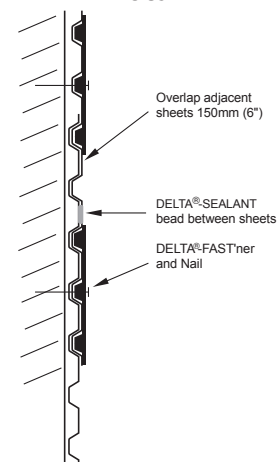
Detail 2



Detail 3



Detail 4



DELTA® protects property. Saves energy. Creates comfort.

DELTA®-MS

Installation Instructions *continued*

- Install DELTA®-FLASH at all below grade cuts of the membrane such as at window wells, walkouts, etc. (See Detail 5).
- Cut back DELTA®-MS 4" from edge of wall opening for installing DELTA®-FLASH, positioning the edge of the DELTA®-FLASH over the DELTA®-MS.
- Use DELTA®-FLASH at sloped cuts in the DELTA®-MS.

REPAIRS:

- In case the membrane gets damaged prior to backfill cut patches of DELTA®-MS large enough to cover any tear.
- Apply a bead of DELTA®-SEALANT around tear in membrane.
- Apply patch over tear and install DELTA®-FAST'ners to hold patch tight against membrane (See Detail 6).
- For technical assistance call the Technical Support Team at 1-888-4DELTA4.

SERVICE PENETRATION:

- Caulk all joints/overlaps in service penetrations including through wall.
- Unroll the DELTA®-MS and cut for overlaps as shown (See Detail 7).

CLEAN-UP AND INSPECTION:

- Walk around foundation and ensure all materials are installed as required.
- Clean up all excess materials and remove from excavation.

HEALTH AND SAFETY:

- Required safety equipment: hard hat, safety boots, gloves, safety glasses.
- Always follow all safety precautions as directed by the Occupational Safety and Health Administration (OSHA – USA) or the Construction Safety Association (Canada).
- There is no health risk in using DELTA®-MS and the recommended components. However, the general codes of practice for protection at work and instructions of the manufacturers of tools and components are to be observed.

DISPOSAL OF WASTE:

- As DELTA®-MS is made out of environmentally friendly HDPE, waste can be placed in household disposal areas and recycled.

LIMITATIONS:

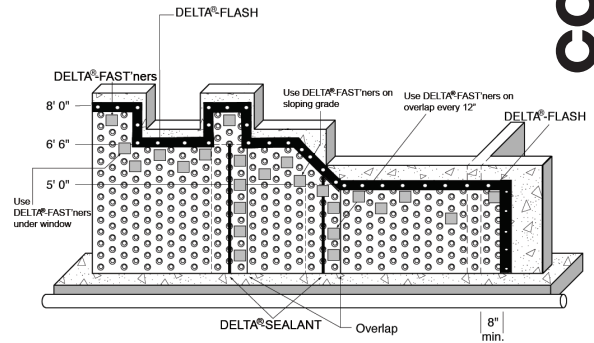
- DELTA®-MS should not be exposed to ultraviolet light for more than 4 weeks.

All rights reserved.

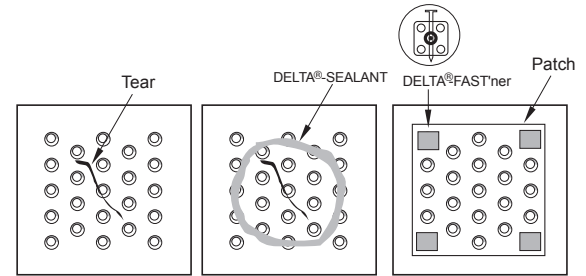
DELTA®-branded quality products manufactured by Cosella Dörken.

The information printed in this brochure reflects product information and specifications at the date of printing. The manufacturer reserves the right to make changes when necessary.

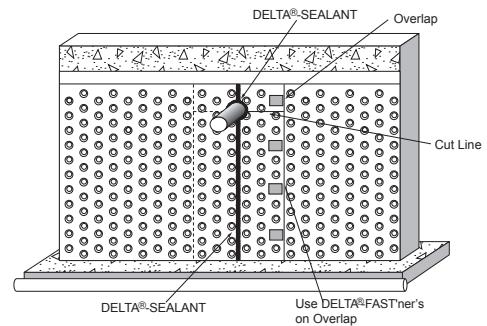
Detail 5



Detail 6



Detail 7



Approximate Conversions to Metric Measures		
Symbol	Multiply by	To Find
in (")/inches	25	mm/millimeters
ft (')/feet	300	mm/millimeters
		1000 mm (millimeters)= 1m (metre)
<i>Example: 1.5" to mm: 1.5 x 25= 37.5 mm</i>		
<i>Example: 10' to m: (10 x 300)/1000= 3 m</i>		