

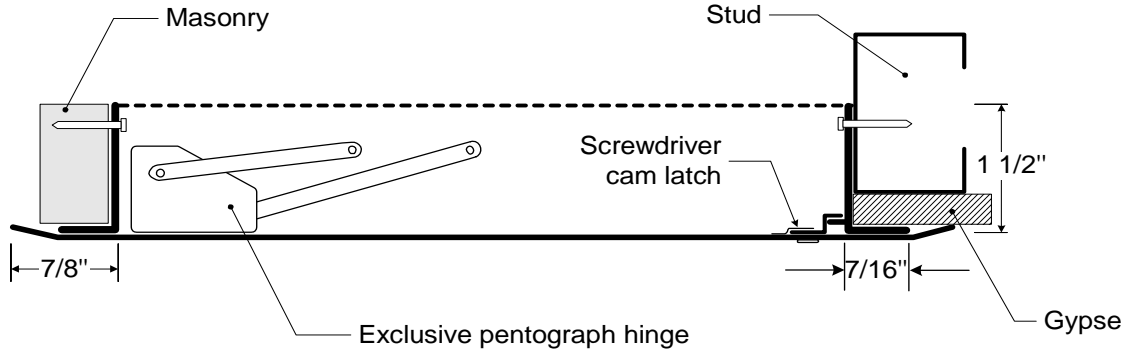
TECHNICAL DATA SHEET

SPYCOR.com

CTR «CONTOUR» ACCESS DOOR

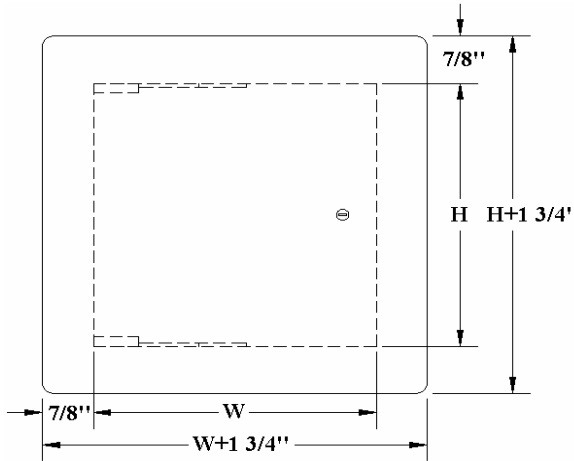
NON-RATED GENERAL PURPOSE WITH HIDDEN FLANGE

INSTALLATION



DIMENSION AND APPEARANCE

DOOR SIZE W x H (IN)	WALL / CEILING OPENING (IN)	# OF LOCKS		SHIP WEIGHT	
		Wall	Ceiling	(LBS)	(KG)
8 1/4 x 8 1/4	8 1/2 x 8 1/2	1	1	3	1.4
8 1/4 x 12	8 1/2 x 12 1/4	1	1	4	1.8
10 x 10	10 1/4 x 10 1/4	1	1	4	1.8
12 x 12	12 1/4 x 12 1/4	1	1	6	2.7
14 x 14	14 1/4 x 14 1/4	1	1	7	3.2
12 x 18	12 1/4 x 18 1/4	1	1	8	3.6
16 x 16	16 1/4 x 16 1/4	1	3	9	4.1
18 x 18	18 1/4 x 18 1/4	1	3	10	4.5
18 x 24	18 1/4 x 24 1/4	1	3	13	5.9
20 x 20	20 1/4 x 20 1/4	1	3	13	5.9
22 x 30	22 1/4 x 30 1/4	2	4	16.5	7.5
22 x 36	22 1/4 x 36 1/4	2	4	18.5	8.4
24 x 24	24 1/4 x 24 1/4	2	4	17	7.7
24 x 30	24 1/4 x 30 1/4	2	4	18	8.2
24 x 36	24 1/4 x 36 1/4	2	4	25	11.4
24 x 48	24 1/4 x 48 1/4	2	5	28.6	13



(Special sizes available upon request)

DESCRIPTION AND MATERIAL SPECIFICATION

Material : 16 gauge steel
Hinge : concealed, exclusive hinge design
Lock / latch : screwdriver operated cam latch
Finish : phosphate dipped steel with *Sherwin-Williams* high quality grey powder coat primer
Packaging : wrapped individually in a box

Options
Lock / latch : cylinder lock and key, anti-theft screw, Allen head hex lock, handle operated cam latch
Material : stainless steel 304 #4 (brushed finish)
Finish : white
Gasketing : neoprene gasket

CENDREX PARTNERS

SHERWIN-WILLIAMS.

M^{AS}TERSPEC®

PROJECT DATA

Project name :		Qty	W	H	# of locks	Finish
Architect :						
Dealer :						
Contractor :						
Location :						
Date :		Special instructions :				
Tagging Instructions :						

CORPORATE OFFICE: 303 Baker Road, Ambler, PA 19002

Tel: 877-293-0784 **Fax:** 215-933-3952 **Info:** @Spycor.com

WAREHOUSES IN: NEW YORK --- PHILADELPHIA --- CHICAGO --- DALLAS

TO GET YOUR ODD SIZES FASTER!